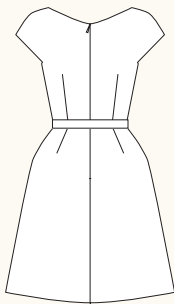
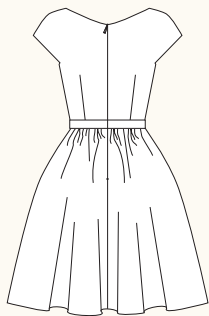


## CAMBIE DRESS / 2 VIEWS



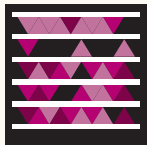
A - BACK



B - BACK

## SNAP ME!

View images of the  
real dress online



Get the free  
mobile app at  
<http://gettag.mobi>

**DESCRIPTION:** Fitted, lined dress features a sweetheart neckline, darted bodice and extended cap sleeves. View A has a slim A-line skirt with slash pockets and View B has a full gathered skirt with inseam pockets.

**RECOMMENDED FABRICS:** View A: Light to medium weight woven fabrics such as linen, wool blends, cotton sateen. View B: Lightweight woven fabrics such as cotton voile, swiss dot, rayon challis, or silk dupioni. Allow extra fabric to match plaids or stripes.

**NOTIONS:** Thread, 1 1/4 yards of fusible interfacing, one 22" invisible zipper.

## BODY MEASUREMENTS (inches\*)

	0	2	4	6	8	10	12	14	16
BUST	30	31	32	33	34½	36	37½	39	41
WAIST	24	25	26	27	28½	30	31½	33	35
HIP	36	37	38	39	40½	42	43½	45	47

## FABRIC REQUIREMENTS (yards\*)

## VIEW A

44/45"	2½	2½	2½	2½	2½	2¾	2¾	2¾	2¾
59/60"	1¾	1¾	1¾	1¾	1¾	2	2	2	2
Lining-45"	2¾	2¾	2¾	2¾	2¾	2½	2½	2½	2½

## VIEW B

44/45"	3	3	3	3	3	3¼	3¼	3¼	3¼
59/60"	2½	2½	2½	2½	2½	2¾	2¾	2¾	2¾
Lining-45"	3	3	3	3	3¼	3¼	3¼	3¼	3¼

## FINISHED MEASUREMENTS (inches\*)

BUST	33	34	35	36	37½	39	40½	42	44
WAIST	25¾	26¾	27¾	28¾	30¾	31¾	33¾	34¾	36¾
HIP A	41	42	43	44	45½	47	48½	50	52
LENGTH**	21½	21¾	22	22¾	22½	22¾	23	23¾	23¾

\*Metric conversions online at [sewaholicpatterns.com/product/1202-cambie-dress](http://sewaholicpatterns.com/product/1202-cambie-dress)

\*\*Length is measured from waistline to hem of skirt