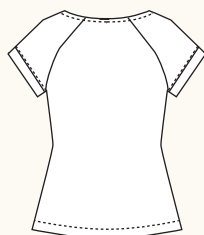
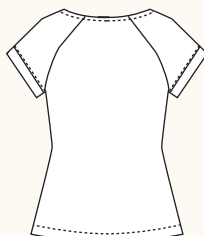


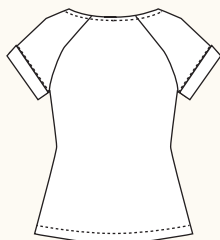
BELCARRA BLOUSE / 3 VIEWS



A - BACK



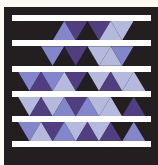
B - BACK



C - BACK

SNAP ME!

View images of
the blouse online



Get the free
mobile app at
<http://gettag.mobi>

DESCRIPTION: Semi-fitted pullover blouse features a wide neckline finished with bias binding, subtle waist shaping and raglan sleeves with bias cuffs. View B features tucks along the sleeves. View C has turnback cuffs and a front patch pocket.

RECOMMENDED FABRICS: Lightweight woven fabrics such as cotton voile or lawn, rayon challis, silk charmeuse or crepe, shirting fabrics. For View B, choose a crisp fabric like cotton lawn or shirting for best results. Allow extra fabric to match plaids, stripes or one-way designs.

NOTIONS: Thread.

BODY MEASUREMENTS (inches*)

	0	2	4	6	8	10	12	14	16
BUST	30	31	32	33	34½	36	37½	39	41
WAIST	24	25	26	27	28½	30	31½	33	35
HIP	36	37	38	39	40½	42	43½	45	47

FABRIC REQUIREMENTS (yards*)

VIEW A

44/45"	2	2	2	2	2	2¼	2¼	2¼	2¼
59/60"	1¾	1¾	1¾	1¾	1¾	2	2	2	2

VIEW B

44/45"	2	2	2	2	2	2¼	2¼	2¼	2¼
59/60"	1¾	1¾	1¾	1¾	1¾	2	2	2	2

VIEW C

44/45"	2	2	2	2	2	2¼	2¼	2¼	2¼
59/60"	1¾	1¾	1¾	1¾	1¾	2	2	2	2

FINISHED MEASUREMENTS (inches*)

BUST	34	35	36	37	38½	40	41½	43	45
WAIST	31	32	33	34	35½	37	38½	40	42
HEM	39	40	41	42	43½	45	46½	48	50
BACK (length)	21¾	22	22¼	22½	22¾	23	23½	23¾	23¾