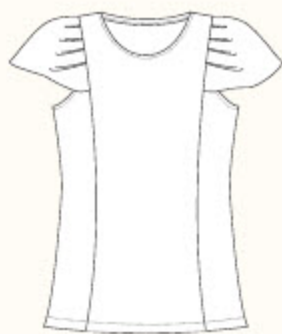
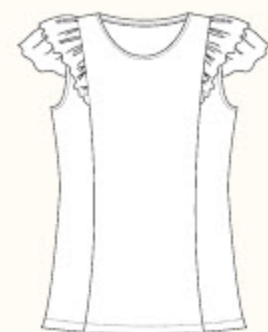


PENDRELL BLOUSE / 3 VIEWS



A



B



C

DESCRIPTION: Semi-fitted pullover blouse has princess seams and bias binding at neck and armhole. View A has softly draped pleated sleeves set into princess seams. View B has ruffled cap sleeves and ruffles set into princess seams. View C is sleeveless.

RECOMMENDED FABRICS: Chiffon, georgette, charmeuse, challis, crepe de chine, lightweight crepe, lightweight jersey knits. Choose a fabric with drape for the best fit. Allow extra fabric to match plaids or stripes.

NOTIONS: Thread.

BODY MEASUREMENTS (inches)

	0	2	4	6	8	10	12	14	16
BUST	30	31	32	33	34½	36	37½	39	41
WAIST	24	25	26	27	28½	30	31½	33	35
HIP	36	37	38	39	40½	42	43½	45	47

FABRIC REQUIREMENTS (yards)

VIEW A										
44/45"	2½	2½	2½	2¾	2¾	2¾	2¾	2¾	2¾	2¾
59/60"	2	2	2	2	2	2	2	2	2	2
VIEW B										
44/45"	2½	2½	2½	2¾	2¾	2¾	2¾	2¾	2¾	2¾
59/60"	2	2	2	2	2	2	2	2	2	2
VIEW C										
44/45"	2	2	2	2¾	2¾	2¾	2¾	2¾	2¾	2¾
59/60"	2	2	2	2	2	2	2	2	2	2

SNAP ME!

View images of the real blouse online.



Get the free mobile app at <http://gettag.mobi>

FINISHED MEASUREMENTS (inches)

BUST	34	35	36	37	38½	40	41½	43	45
WAIST	31	32	33	34	35½	37	38½	40	42
HEM	40	41	42	43	44½	46	47½	49	51
BACK (length)	25½	25¾	26	26¼	26½	26¾	27	27¼	27½